



APS-DA

ADDRESSABLE DUAL ACTION PULL STATION



Features

- Durable Die Cast Manual Pull Station
- Matching Fire Alarm Control Panel Key
- Mounts in Single Gang Box
- Dual Action
- Compatible with JFS-A Series or JFS-IP Series using Nohmi Protocol
- Rated Voltage: 22 to 24 VDC
- Standby Current Draw: 0.325 mA
- Alarm Current Draw: 0.325 mA
- Temperature Range: 32°F to 120°F (0°C to 49°C)
- Relative Humidity Range: 0 to 93% (non-condensing)



P/N 98540

Description

The APS-DA addressable manual pull stations are noncoded and provide an addressable point on an alarm system. The APS-DA has terminals that allow the signaling line circuit (SLC) to be wired directly to the device and then exit to the next device in the loop. The APS-DA will mount in a single gang box or the P32-BB surface mount back box.

Operation

The APS-DA is activated by lifting the front cover and then pulling the white "T" bar. Once activated, the "T" bar cannot be reset without opening the front cover. Opening the front cover will also activate the manual pull station.

To reset the pull station, use the WS-93 key and turn the lock to open the front cover. Once the cover is open, push the white "T" bar into the normal position and re-secure the front cover to the device.

Setting The Address

The APS-DA must have the address set prior to installation of the manual pull station. This is accomplished using the handheld programmer or the SLC programmer on the fire alarm control panel (FACP). The address is stored on the module attached to the pull station and should be uniquely addressed. The device address should be recorded on the mounting plate of the pull station for future reference.

ADA Compliance

The APS-DA is required to be mounted between 42 inches (106.7 cm) and 48 inches (121.9 cm) from the finished floor. The maximum side reach is allowed to be 54 inches (137.2 cm).

CAUTION

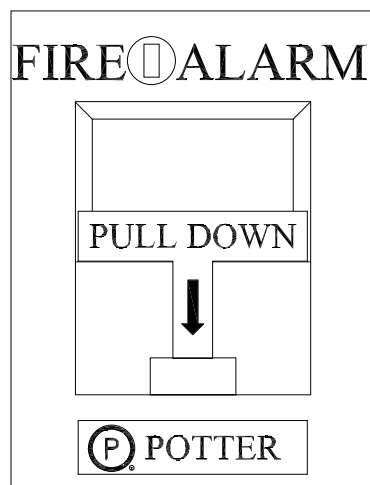
This device is to be installed per the manufactures instructions in accordance with the applicable NFPA standards, national and local fire and electrical codes. The Authority Having Jurisdiction (AHJ) should be consulted if there are any questions or local requirements.

This device should be tested in accordance with NFPA standards.

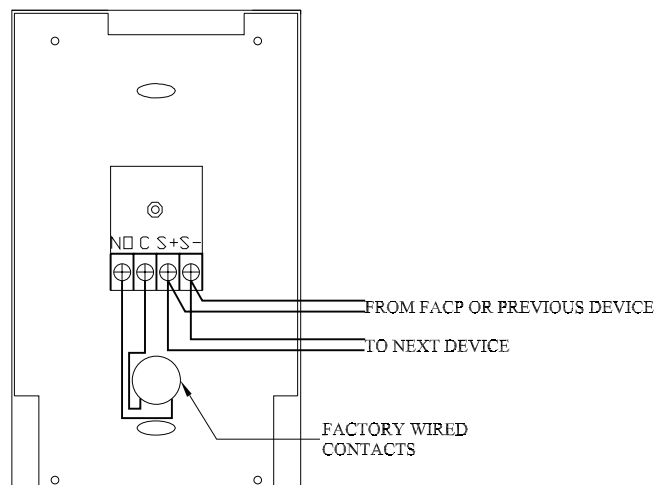
Failure to follow the manufacturers recommendations could lead to the APS-DA failing to report an alarm condition. It is the responsibility of the alarm installer to ensure this device is installed as intended. If there are questions, contact Technical Support for clarification.



Pull Station Front View



Pull Station Back View



Ordering Information		
Model Number	Description	P/N
APS-DA	Addressable Dual Action Pull Station, JFS-A Series	98540
P32-BB	Box, Surface Mount, Red, Indoor	98539
WS-93	Key, Spare, JFS Series	99622

Note: Approvals/Listings maintained by and manufactured by Potter Electric Signal Company.

The seller makes no warranties, express or implied, including, but not limited to, the implied warranties of merchantability and fitness for a particular purpose, except as expressly stated in the seller's sales contract or sales acknowledgment form. Every attempt is made to keep our product information up-to-date and accurate. All specific applications cannot be covered, nor can all requirements be anticipated. All specifications are subject to change without notice.



1102 Rupcich Drive
 Millennium Park
 Crown Point, IN 46307
 TEL: (219) 663-1600 FAX: (219) 663-4562
 e-mail: info@janusfiresystems.com
www.janusfiresystems.com