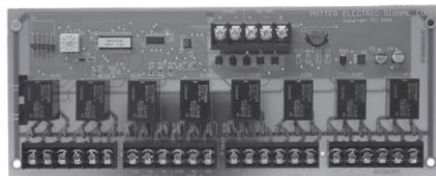




ARM-44

RELAY MODULE



P/N 19091



Standard Features

- Provides 8 Form C relay outputs
- Zone type operation - Operates for specific zone/circuit input signals.
- Mounts in cabinet with terminal accessible for ease of wiring
- Disable switch for maintenance
- Selectable latching or common setting

Electrical Ratings:

- 9.6 mA Standby
- 157.3 mA Max alarm current*

* Maximum current is all relays operating simultaneously.

Contact Ratings:

- 3 amps at 24 VDC max. resistive load
- 22-12 AWG

Overview

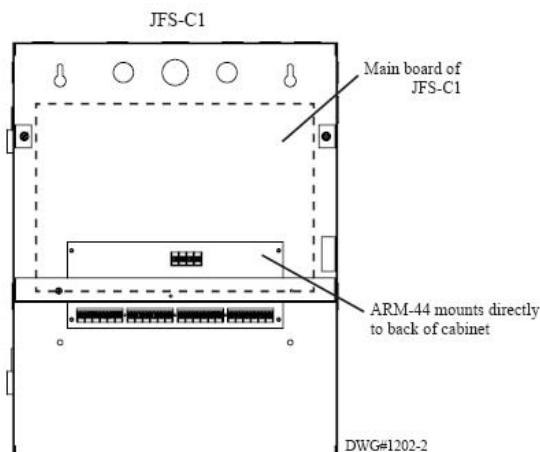
The ARM-44 is an auxiliary relay module designed to operate with the Janus Fire Systems® JFS-C1 Releasing Panel to provide 8 independent form C relay outputs. The 4 initiating zones and the 4 output circuits each have a dedicated relay. Each relay is rated for 3 amps at 24 volts DC resistive load. The relay module directly mounts to the back of the cabinet and is connected to the main board. All of the relay terminals are readily marked and accessible for the ease of wiring. There is a disable switch for disabling the relays when the system is being tested or serviced.

Specifications

The contractor shall furnish and install an ARM-44 relay module in the JFS-C1 panel. The relays shall connect via RS-485 and 24 VDC power. The relays shall be rated for 3 amps at 24 VDC resistive load. The relays shall be linked to the four inputs and four outputs. The relay board shall have a disable switch to allow for maintenance and testing.

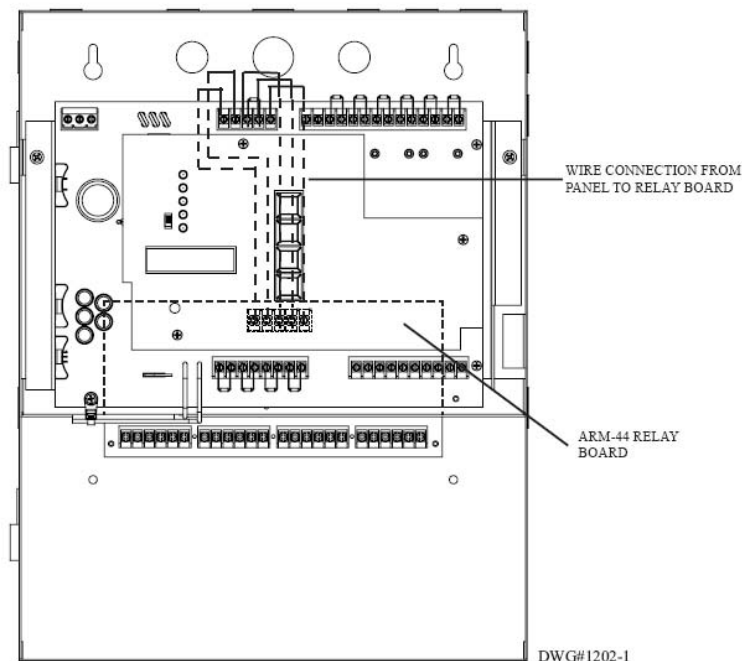
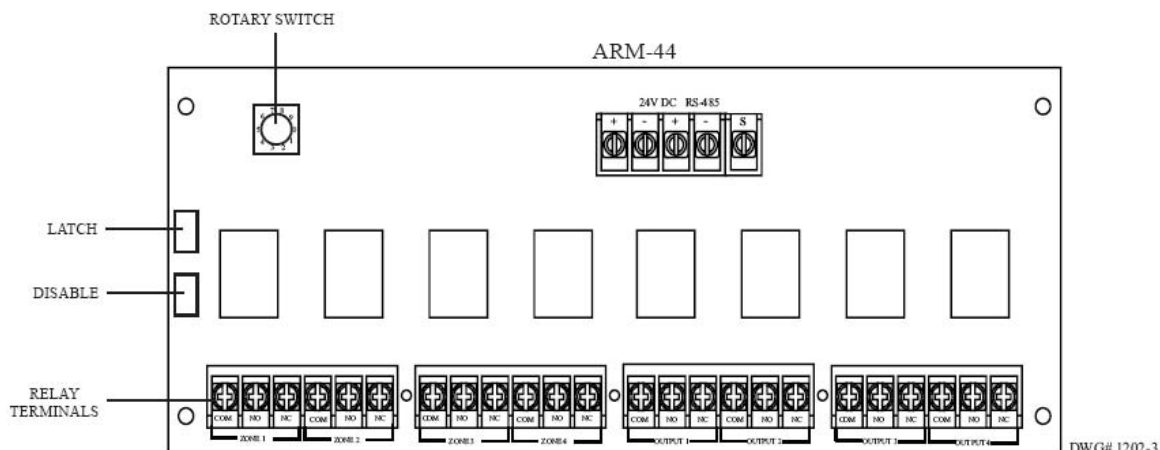
Installation

To install the ARM-44, remove the main board of the JFS-C1 by removing battery strain relief and two chassis screws. Lift out main board and set in safe place. The ARM-44 mounts on 4 standoffs on the back of the cabinet with screws provided.





The installer can install up to 4 annunciators or a relay module and 3 annunciators. The installer must set the rotary switch for the number device it is in line. For example, relay board address 1, annunciator address 2, if wired from panel to relay board then annunciator.



Note: Approvals/Listings maintained by and manufactured by Potter Electric Signal Company.

The seller makes no warranties, express or implied, including, but not limited to, the implied warranties of merchantability and fitness for a particular purpose, except as expressly stated in the seller's sales contract or sales acknowledgment form. Every attempt is made to keep our product information up-to-date and accurate. All specific applications cannot be covered, nor can all requirements be anticipated. All specifications are subject to change without notice.



1102 Rupcich Drive
Millennium Park
Crown Point, IN 46307
TEL: (219) 663-1600 FAX: (219) 663-4562
e-mail: info@janusfiresystems.com
www.janusfiresystems.com