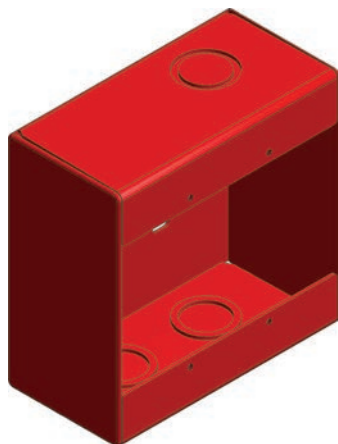




# SMB-2

## SURFACE MOUNT BOX



P/N: 18881

### Standard Features

- Standard two-gang box
- Signal Red S008 (Ral 3001) Color
- Sturdy steel one-piece construction
- Combination 1/2 inch & 3/4 inch knockouts



### Overview

The Janus Fire Systems® SMB-2 Surface Mount Box is a two-gang utility box designed for surface mounting where a heavy-duty general purpose box is required. Devices can be mounted to pre-drilled and tapped (#6-32) holes in standard two-gang mounting configuration.

The box is painted signal red S008 (Ral 3001).

They are constructed from heavy duty 16 gauge cold rolled steel (CRS) for maximum durability. The boxes are easily surface mounted with #8 screws using the mounting slots provided in the back of the box. All boxes are provided with convenient combination 1/2 inch and 3/4 inch conduit knockouts on the top and bottom.

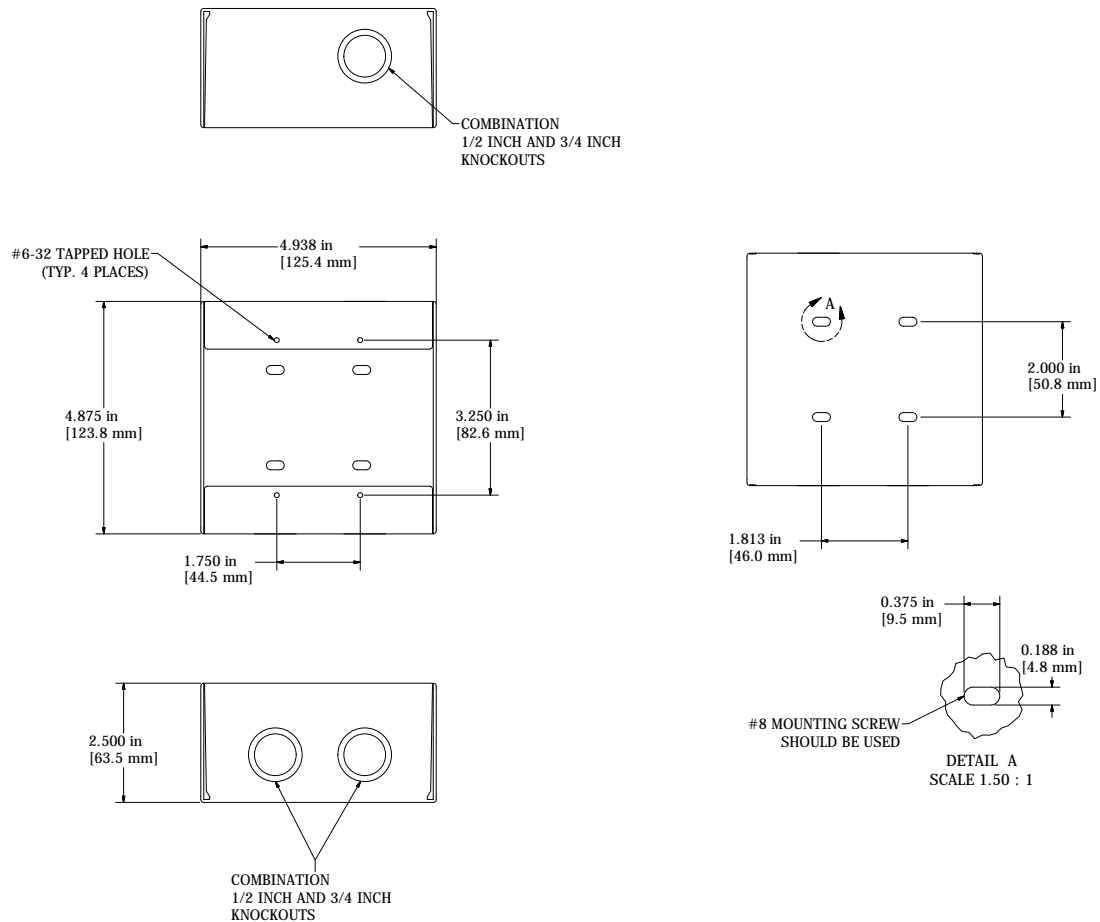
### Applications

These surface mount boxes are suited for a variety of uses including:

- End-of-Line Resistors
- Manual Pull Stations
- CO2 Discharge Stations
- Clean Agent Discharge Stations



## Dimensions



## Ordering Information

P/N	Description	Ship Wt. lb (kg)
18881	Box, Surface Mount, 2-Gang, Red, SMB-2	2.0 (0.9)

The seller makes no warranties, express or implied, including, but not limited to, the implied warranties of merchantability and fitness for a particular purpose, except as expressly stated in the seller's sales contract or sales acknowledgment form. Every attempt is made to keep our product information up-to-date and accurate. All specific applications cannot be covered, nor can all requirements be anticipated. All specifications are subject to change without notice.



1102 Rupcich Drive  
Millennium Park  
Crown Point, IN 46307  
TEL: (219) 663-1600 FAX: (219) 663-4562  
e-mail: [info@janusfiresystems.com](mailto:info@janusfiresystems.com)  
[www.janusfiresystems.com](http://www.janusfiresystems.com)